

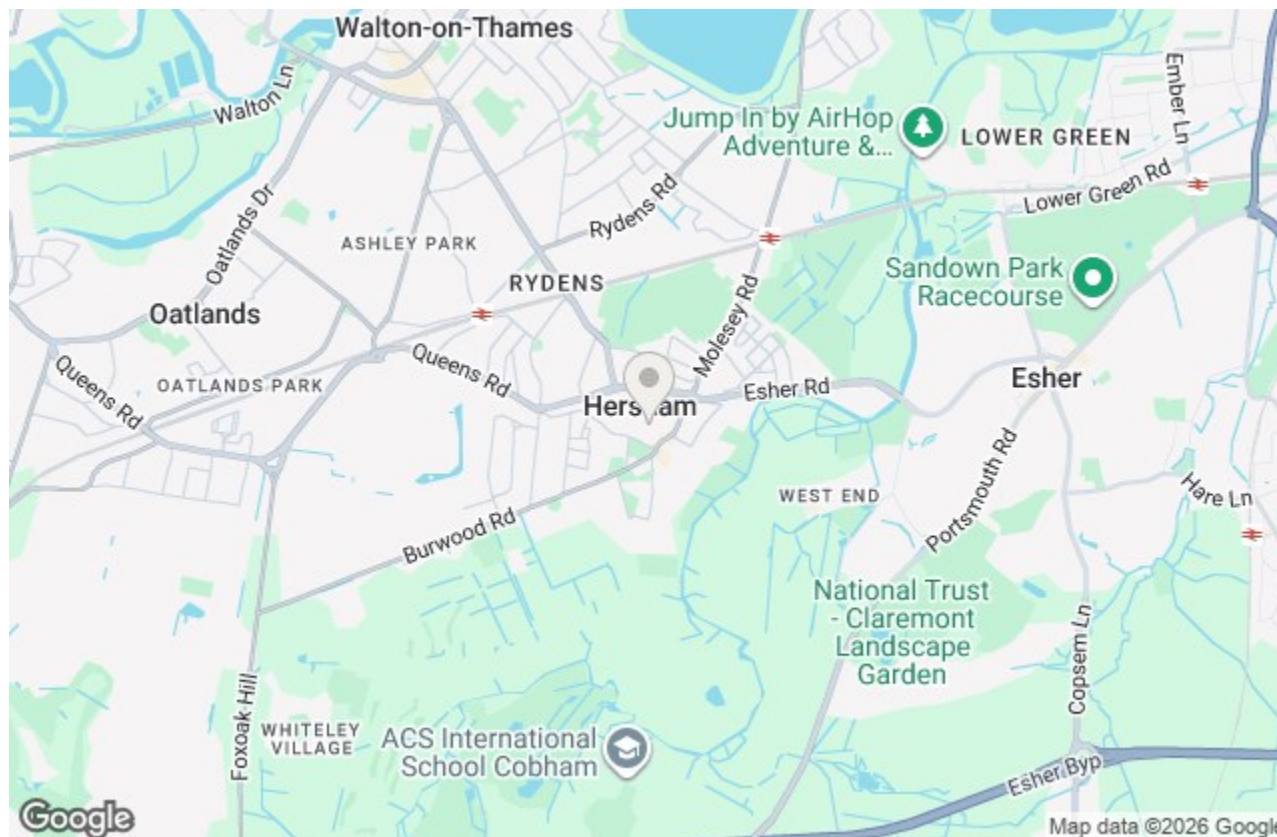
27, Claremont Close, Walton-On-Thames, KT12 4RP

Energy Efficiency Rating		Current	Potential
Very energy efficient - lower running costs			
(92 plus) A			
(81-91) B			
(69-80) C			
(55-68) D			
(39-54) E			
(21-38) F			
(1-20) G			
Not energy efficient - higher running costs			
England & Wales	EU Directive 2002/91/EC		

Environmental Impact (CO ₂) Rating		Current	Potential
Very environmentally friendly - lower CO ₂ emissions			
(92 plus) A			
(81-91) B			
(69-80) C			
(55-68) D			
(39-54) E			
(21-38) F			
(1-20) G			
Not environmentally friendly - higher CO ₂ emissions			
England & Wales	EU Directive 2002/91/EC		



£530,000 Freehold



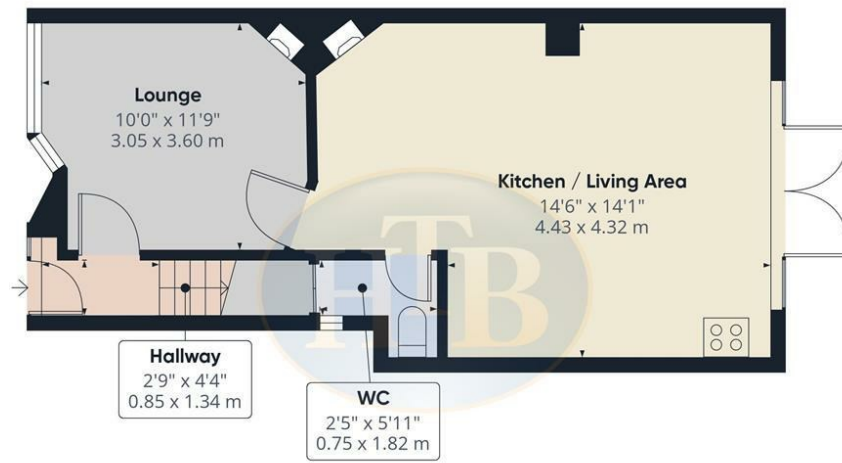
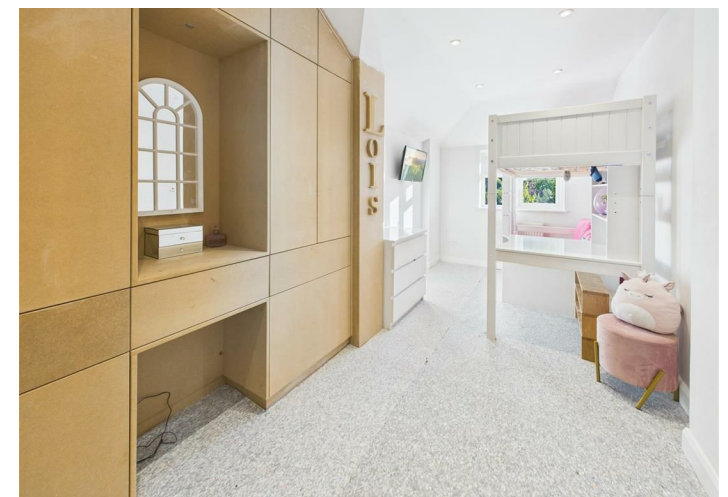
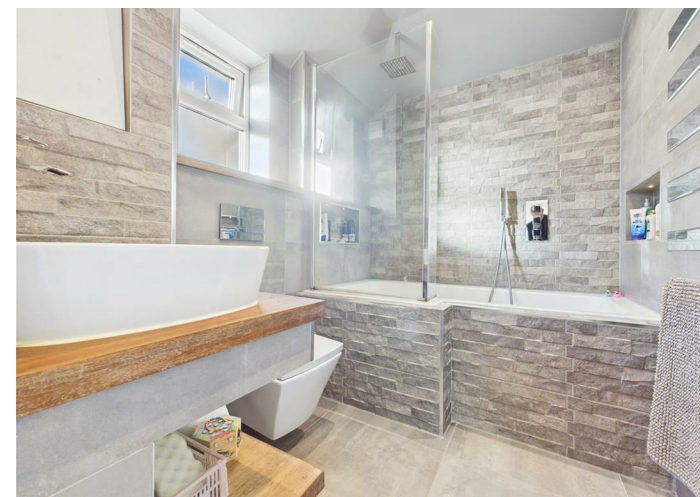
Located in the village centre cul-de-sac of Claremont Close, this delightful semi-detached house in Hersham, Walton-On-Thames, offers a perfect blend of comfort and convenience. With three generously sized double bedrooms, this property is ideal for families or those seeking extra space.

The heart of the home is a spacious open-plan kitchen, dining, and living area, which is perfect for entertaining or enjoying family time. Large doors open out to a well-maintained rear garden stretching approx 80ft in length, providing a lovely outdoor space for relaxation and play. The property also boasts a further reception room, allowing for versatile living arrangements to suit your lifestyle along with a convenient downstairs W.C.

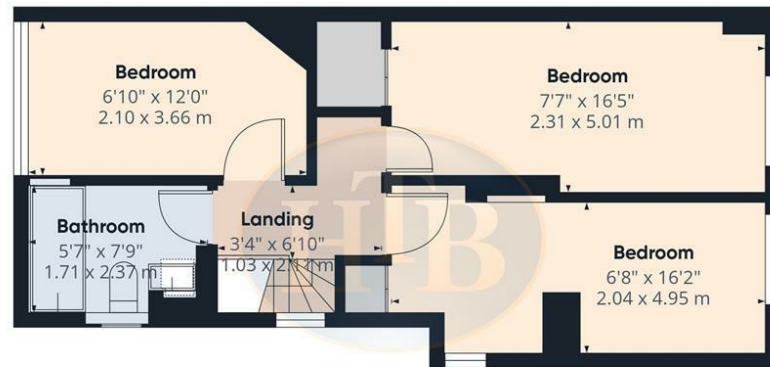
On the first floor are three double bedrooms and the well-appointed family bathroom including a three piece suite with shower over the bath, complemented with contemporary tiling and a chrome heated towel rail. This property has been thoughtfully extended on both the ground and first floors, enhancing its overall appeal. Off-street parking for two vehicles is available at the front, ensuring convenience for you and your guests.

Situated in the heart of the village, this property is within easy reach of local shops and the station, making it an excellent choice for commuters and those who appreciate the vibrancy of village life. This home is not just a place to live; it is a sanctuary that offers both tranquillity and accessibility. Don't miss the opportunity to make this wonderful property your own. Call Harnes Turner Brown on 01932 222266.

Claremont Close, Walton-On-Thames, KT12 4RP



Floor 0 Building 1



Floor 1 Building 1



Floor 0 Building 2



Approximate total area⁽¹⁾
874 ft²
81.3 m²

(1) Excluding balconies and terraces

Calculations reference the RICS IPMS 3C standard. Measurements are approximate and not to scale. This floor plan is intended for illustration only.

GIRAFFE360

- SKILFULLY EXTENDED AT GROUND AND FIRST FLOOR LEVELS
- VILLAGE CENTRE LOCATION WITH EASY ACCESS TO THE STATION
- SPACIOUS OPEN PLAN KITCHEN/DINING/LIVING AREA
- NO ONWARD CHAIN
- DOWNSTAIRS CLOAKROOM
- THREE DOUBLE BEDROOMS
- APPROX 80FT REAR GARDEN
- OFF STREET PARKING
- LUXURIOUSLY APPOINTED BATHROOM INCLUDING QUALITY SHOWER OVER THE BATH
- EPC D

This plan is a representation of the property and measurements, where given, are approximate. None of the fixtures and fittings have been tested by us. These details are thought to be materially correct but we cannot guarantee there are no error and emissions and they do not form part of any contract